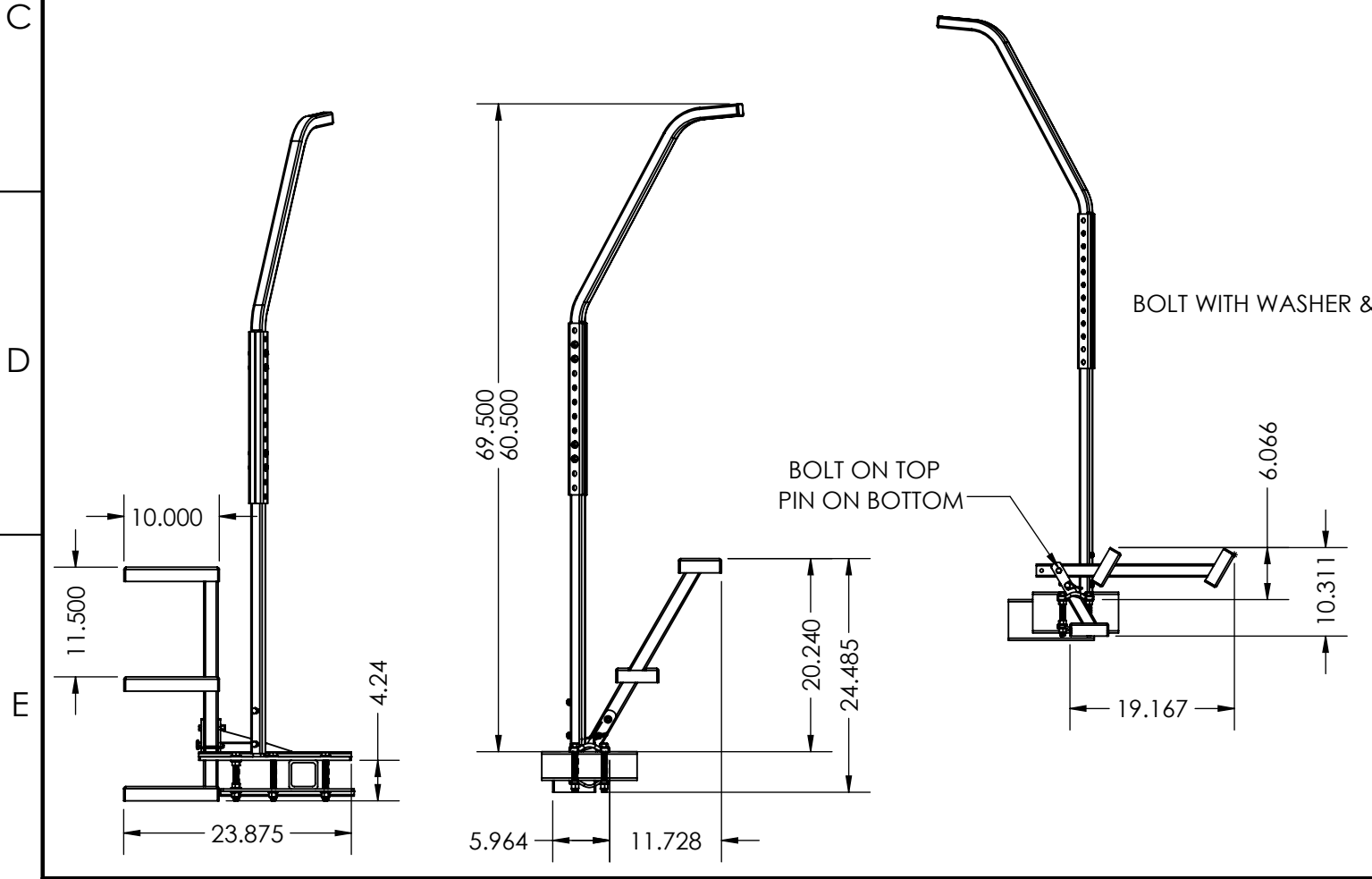
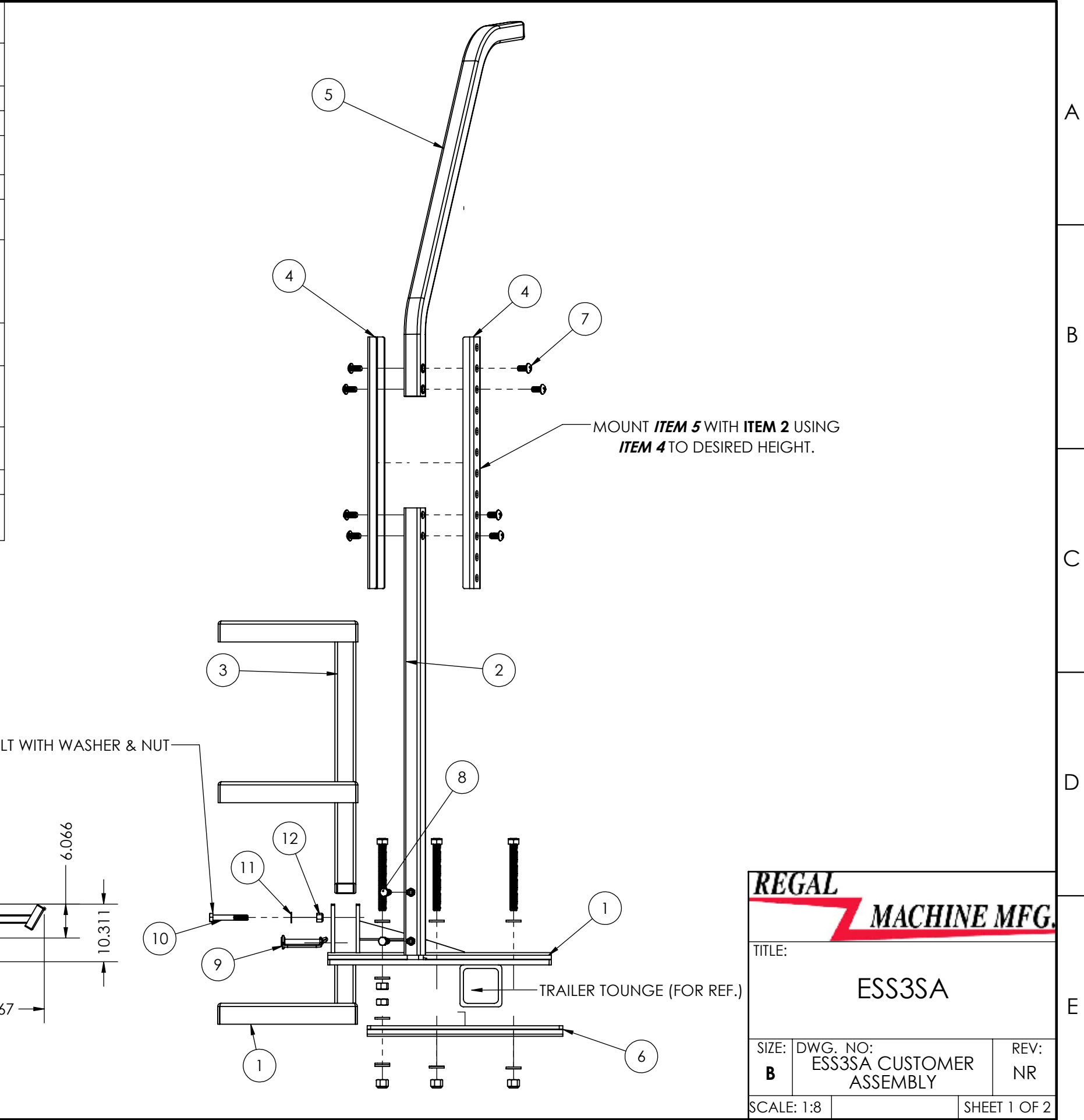


ITEM NO.	PART NUMBER	DESCRIPTION	ALL HARDWARE/QTY.
1	RM5222	ESS3SA TRAILER MOUNT WELDMENT	1
2	RM5212	LOWER HANDRAIL TUBE	1
3	RM5227	ESS3SA STEP WELDMENT	1
4	RM5210	HANDRAIL CHANNEL BRKT.	2
5	RM5211	TOP HANDRAIL TUBE	1
6	RM5224	ESS3SA BOTTOM MNT BRKT.	1
7	Screw, Machine, Phillips, Rounded Head, .375-16 x .750 Long	PHILLIP SCREWS	8
8	CAP SCREW, HEX HEAD	3/8-16 X .75 LONG	2
9	.375 D x 2.50 LENGTH SNAPPER PIN	SNAPPER PIN	1
10	CAP SCREW, HEX HEAD	3/8-16 X 2.50 LONG	1
11	FLAT WASHER	3/8" FLAT WASHER	1
12	Nut, Hex, Lock, Nylon, .375-16	3/18-16 NUT	1



REGAL MACHINE MFG.

TITLE: **ESS3SA**

SIZE: **B** DWG. NO: **ESS3SA CUSTOMER ASSEMBLY** REV: **NR**

SCALE: 1:8 SHEET 1 OF 2

ESS3-SA ASSEMBLY

MOUNTING HARDWARE (INCLUDED)

- 1/2-13 X 6" Zinc coated bolts (QTY. 6) will be provided. These bolts will work on mounting surfaces up to 4" tall. If your mounting surface is taller than 4" you will need to purchase longer bolts.
- 1/2" Flat washers (QTY. 12)
- 1/2-13 Nylon locking nuts (QTY. 6)
- An additional 4 washers and 4 standard nuts will be provided for space between the top and bottom bracket (see drawing).

HANDRAIL ASSEMBLY

- The lower and upper handrails are held together by two split collars with 3/8" holes drilled in them. These holes are spaced 1.5" for a total adjustment of 12" up or down.
- Use the phillips head screws (QTY. 8) for the top and bottom hand rail. 4 screws on top, 4 screws on bottom.
- Adjust the handrail to a height that works best for you. The height can be adjusted from 60"-72"
- Once handrail is adjusted to the desired height, place it over the 7/8" x 7/8" x 7" bar stock on the top bracket assembly and tighten using the 2 set screws.

ATTACHING BRACKETS TO TONGUE

- Secure the top and bottom brackets to the tongue/frame with the 1/2" bolts, flat washers, and nylon nuts (INCLUDED)

ATTACHING SWINGAWAY STEPS TO BRACKET

- Secure ESS3-SA step weldment to the top bracket using clevis pin (top) and the hex head cap screw w/ flat washer and locking nut (bottom)
- To operate the swingaway step, remove the clevis pin and collapse steps down.

LOCTITE

- We recommend applying mid-grade Loctite to all connections. This will help prevent screws and bolts from coming loose while traveling.

IF FURTHER ASSISTANCE IS NEEDED, PLEASE CONTACT OUR OFFICE.

Email: info@easystepsystem.com <<mailto:info@easystepsystem.com>>

Phone: 800-966-1502